

Company site: Gärtitzer Straße 1
04720 Großweitzschen

**Management
Director:** Markus Mütsch



LiCoMo GmbH is specialised in manufacturing of components made of **fibre reinforced materials** (e.g. carbon, glass and aramid fibre in combination with thermoplastics and thermosetting plastics).

Based on **composite materials**, we produce high performance components according to the **requirements of our customers**.

We support **our customers** in all phases of the development process from the **initial idea** up to **manufacturing** as well as material and component **qualification**.

We support our customers in all phases of the development process
from the initial idea up to manufacturing
as well as material and component qualification.



lightweight – stable – reliable

Mass reduction



Mass reduction
of the complete system

Stability



High stiffness based on
comparable dimension

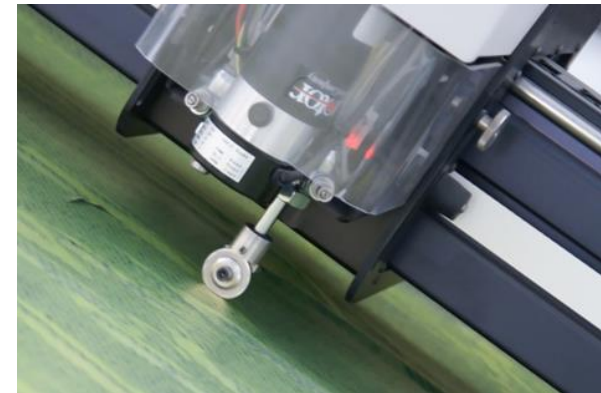
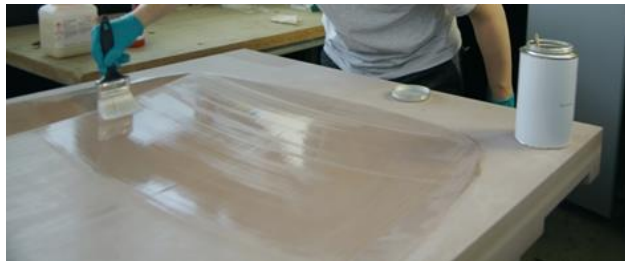
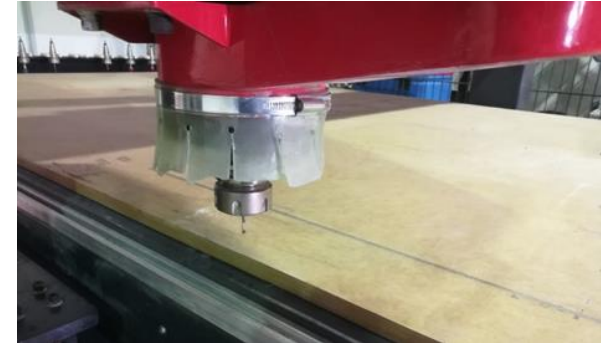
Reliability



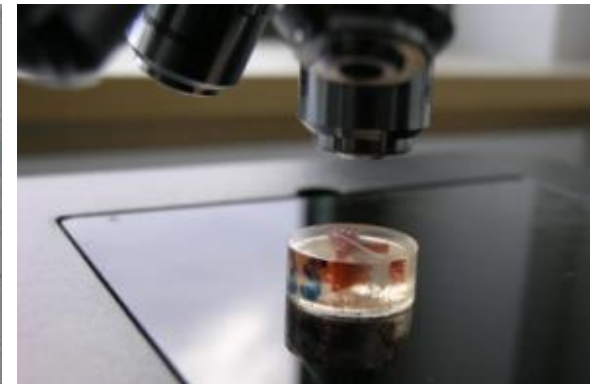
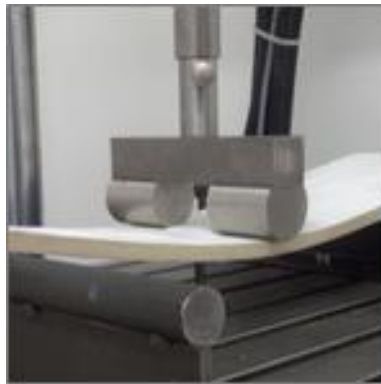
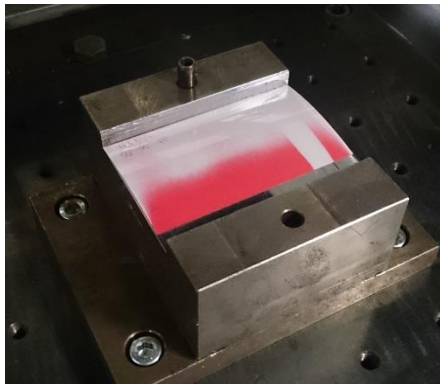
Shape accuracy at
temperature changes

Extended potentials and an optimized solution for components are based on the combination of mass reduction, stability and reliability

- Prepreg technology based on low pressure and autoclave processes
- Vacuum infusion and injection bases technologies (RTM)
- Filament winding
- Hot and cold moulding of thermoplastics and thermo-sets
- Hand lay-up of components
- Silicone technology
- Heat treatment

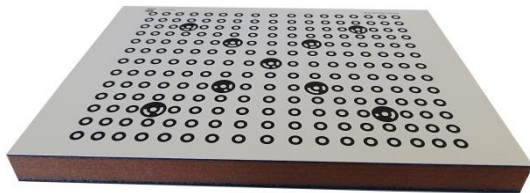
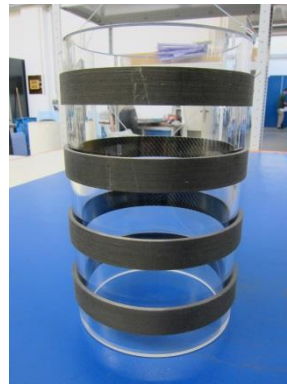
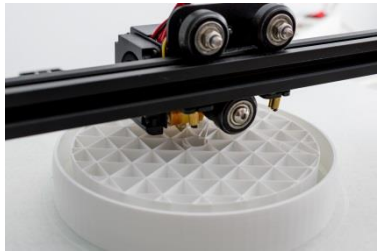


- Mechanical testing (static and fatigue)
- Impact testing
- Media and ageing testing
- Estimation of the fibre volume content
- Optical microscopy
- Ultrasonic measurement
- Process monitoring (force, displacement, strain, temperature, pressure)



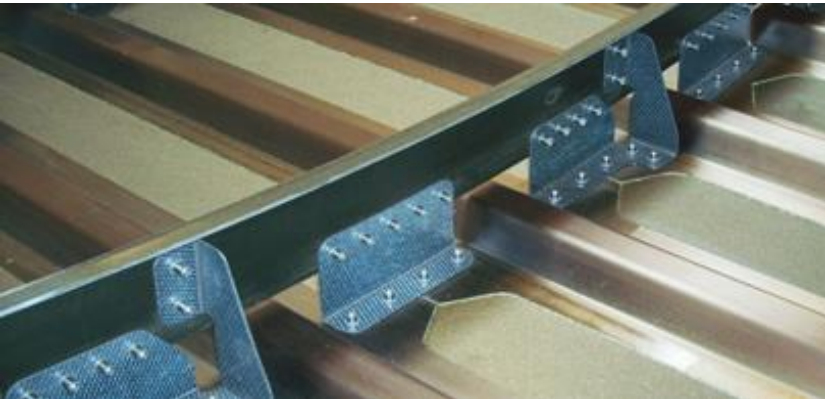
Product categories:

- Plates and panels (CFRP panels, GFRP panels, sandwich panels)
- Profiles, shafts, pipes
- Pressure vessels and hydraulic cylinder
- 3D-Printing
- Customized solutions





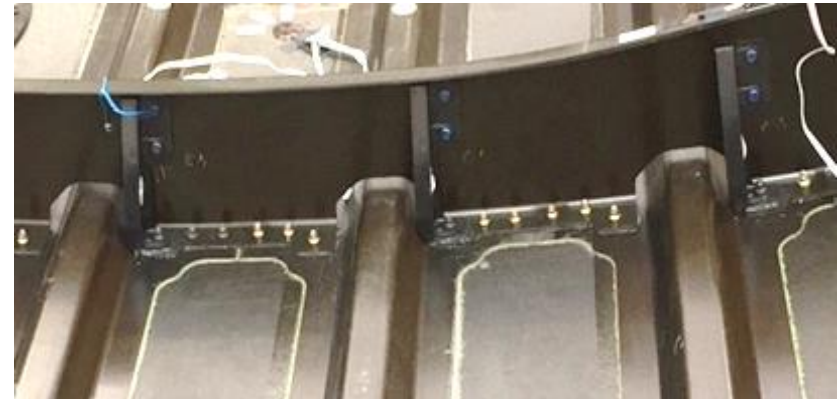
Differential design



... with a large number of components



Integral design



... a monolithic component

PROBLEM

Influence of temperature

SOLUTION

Protective cover based on glass fibre reinforced plastics (GFRP)



GFRP protective equipment



PROBLEM

Weight, stiffness and thermal expansion of the components

SOLUTION

Rifle stock designed in sandwich construction and made of carbon fibre reinforced plastics (CFRP)



Rifle stock



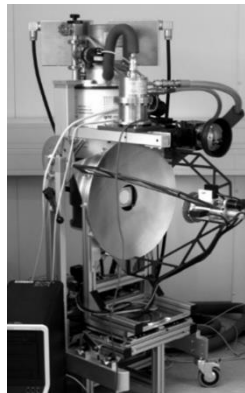
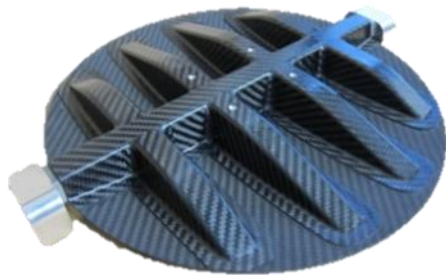
CFRP – rifle stock



GFRP – protective cover



CFRP – mirror for body scanner



Composite casing & pipes

